

# RMB Small Cap Fund



## Portfolio Update: Third Quarter 2024

During the quarter ending September 30, 2024, the RMB Small Cap Fund (the "Fund" or "RMBBX") returned +12.63%, net of fees, compared to a +9.27% return for the benchmark Russell 2000® Index, while the broad market Russell 3000® Index returned +6.23%.

	Quarter	YTD	1 Year	3 Years	5 Years	10 Years	Since Inception (8/30/2002)
RMBBX (net of fees)	+12.63%	+16.55%	+31.52%	+3.32%	+10.05%	+9.29%	+10.34%
Russell 2000® Index	+9.27%	+11.17%	+26.76%	+1.84%	+9.39%	+8.78%	+9.67%
Russell 3000® Index	+6.23%	+20.63%	+35.19%	+10.29%	+15.26%	+12.83%	+10.82%

**Performance listed is as of September 30, 2024. Performance over one year is annualized. Past performance is not a guarantee of future results. The performance data quoted represents past performance and is not a guarantee of future results. The investment return and principal value of an investment will fluctuate, so that those shares, when redeemed, may be worth more or less than their original cost. Current performance may be lower or higher than the data quoted. To obtain performance as of the most recent month end, please call 855-280-6423. The Fund's gross expense ratio is 1.18%.**

**The Fund's investment advisor, Curi RMB Capital, LLC, has adapted a contractual expense limitation agreement for each fund through April 30, 2025, reducing the applicable Fund's operating expenses. This may be continued from year to year thereafter if agreed upon by all parties. In the absence of such waivers and/or reimbursements, the applicable Fund's total return and yield would be lower.**

The third quarter of 2024 saw a significant shift in market dynamics, with small-cap stocks outperforming their large-cap counterparts by over 300 basis points. This outcome supported our previous quarter's outlook section, "Benign Inflation Scenario: A Catalyst for market broadening and small cap outperformance." The "benign inflation" catalyst arrived on July 11<sup>th</sup>, when the CPI inflation report showed a decline for the first time since May 2020, igniting a risk-on rally. In the subsequent eleven days, small-caps surged ahead, outpacing large-caps by an impressive 13%.

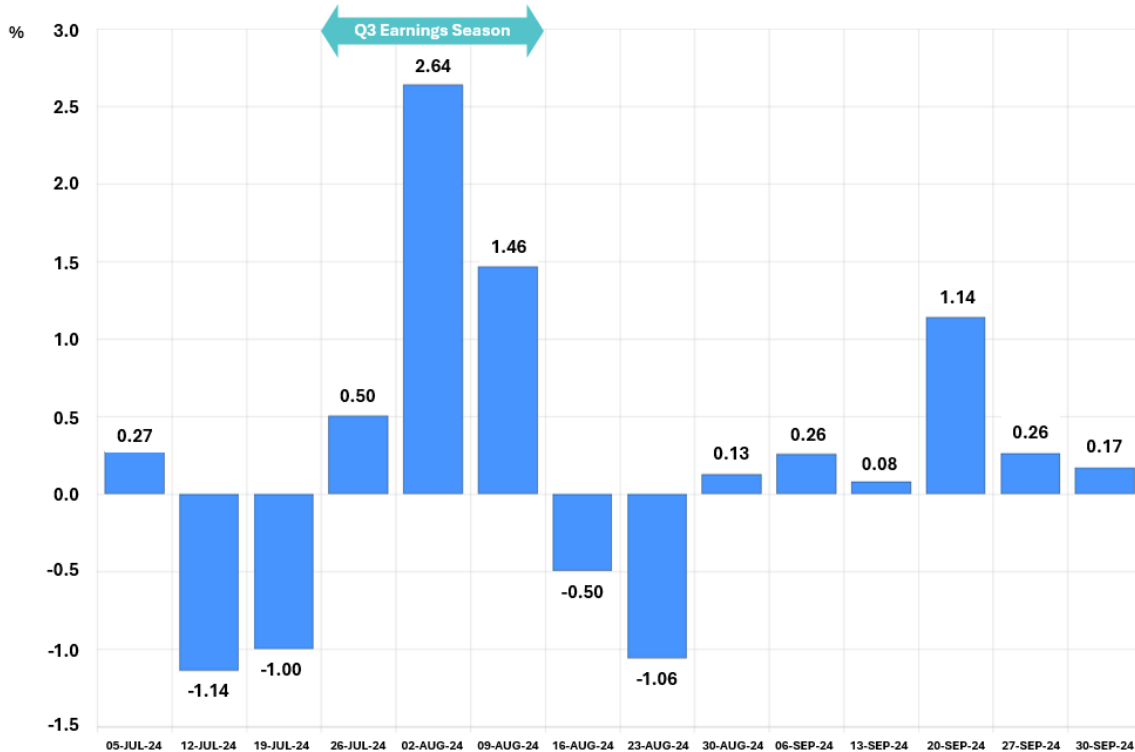
However, the quarter was marked by substantial volatility. The VIX<sup>1</sup> fluctuated between 11 and 65, driving performance swings for the Russell 2000® Index from +14% to -14% within the quarter. A pivotal moment occurred on July 28<sup>th</sup> when the Bank of Japan unexpectedly raised interest rates by 25 basis points, triggering a global "margin call" causing highly leveraged investors to unwind yen carry trades. This event spiked the VIX to 65 and triggered small-cap stocks to decline 14%.

By the end of July, as earnings season progressed, stocks gradually regained ground as companies generally reported stronger-than-anticipated fundamentals.

As a more quality biased portfolio, the Fund typically lags in strong "risk-on" markets, as the bar chart in Exhibit 1 depicts early in the quarter when the CPI report triggered a risk on rally.

<sup>1</sup> Chicago Board Options Exchange Volatility Index (VIX), is a real-time index that measures the stock market's expected volatility over the next 30 days.

**Exhibit 1. RMB Small Cap Fund vs. Russell 2000\* Index Weekly Performance Q3**  
 (28-JUN-2024 - 30-SEP-2024 | U.S. Dollar)



Source: FactSet

However, strong quarterly results during the heart of earnings season between July 26 and August 16 helped the Fund power through this headwind. We are very pleased to have outperformed by over 300 basis points during a predominately "risk-on" quarter.

The quarter's most significant development came on September 18, when Federal Reserve Chairman Powell announced a 50 basis point cut in the Fed Funds rate. This decision marked the beginning of a new rate-cutting cycle and reduced the probability of a recession, potentially setting the stage for favorable market conditions, especially for small caps, in the coming quarters.

The best performing sectors were Materials, Utilities, Industrials, and Healthcare. Energy declined as oil fell from the mid \$87per bbl to \$72 per bbl.

## Contributors and Detractors

Contributors benefited from a combination of better-than-expected company specific execution, as well as positive tailwinds from anticipated lower interest rates.

Carpenter Technology Corp. (CRS) continued to significantly outperform as the company executed well on improving productivity, converting historic-high backlog and reallocating capacity to higher value product category. Key end-market aerospace and defense remained in the upper end of the super cycle, which is a favorable external factor. The company has officially transitioned to the lifecycle category of Cork from Turnaround, evidenced by structurally higher return on investment which continued to modestly improve. We maintained strong conviction on the company but have been increasingly cautious about the elevated position size, given the cyclical nature of the stock.

Eagle Materials Inc. (EXP) had a nice recovery during the quarter driven by the improving cyclical trend. More specifically, its wallboard business started to see stabilizing volumes and improving pricings driven by the anticipated housing market rebound, as mortgage rates started to decline. The cement business remained resilient, evidenced by a sold-out condition and stronger pricings. Most importantly, EXP's industry-leading cost structure enabled them to defend the wallboard margin efficiently during the downcycle, which is a key idiosyncratic milestone of our investment thesis. We maintain the high conviction rating on the company despite the recent stock run.

Fair Issac Corp. (FICO) benefited from Fed rate cuts that drive declining mortgage rates, which is a huge boost for its mortgage business. FICO's current mortgage inquiry volumes still run at just half of the level that they averaged in 2015-2019, which is meaningful room for upside. The anticipated score pricing increase will drive further upsides. It is a quiet quarter for the software business, but we continue to believe our thesis is nicely playing out as FICO is transforming into a more dynamic growth company by reinvesting into the software business.

Portfolio detractors experienced headwinds from falling energy prices or reported disappointing company specific results.

Matador Resources Co.'s (MTDR) stock was a relative underperformer during the quarter, largely due to weaker oil prices that fell approximately 16% due to recession concerns (both domestically and in China) and fears that OPEC may raise production. On the quarter, MTDR reported better than expected production and lower than expected cap ex, signaling improved efficiencies that are reducing well costs and accelerating production. Stand-alone guidance was raised but management deferred providing much pro-forma commentary until the Ameredev acquisition closes in 3Q. The Ameredev acquisition adds core acreage directly close to Matador-operated positions as well as a midstream component that further bolsters Matador's already strong midstream footprint. While this does take leverage up to ~1.3x debt/EBITDA the company's strong free cash flow will allow them to quickly reduce debt to sub-1x levered by year-end 2025. Further, the strong integration and quick de-leveraging following the Advance Energy acquisition in April 2023 provides confidence in the strategy.

West Pharmaceutical Services Inc. (WST) was an underperformer during the quarter, largely due to a miss and lowered guidance in the quarter as a result of customer de-stocking, as customers move toward more normalized safety stock levels

### RMB Small Cap Fund

#### THIRD QUARTER 2024 CONTRIBUTION REPORT

Ranked by Basis Point Contribution

	Basis Point Contribution	Return
<b>Top Contributors</b>		
Carpenter Technology Corp.	+141	+45.84%
Fair Isaac Corp.	+115	+30.43%
Eagle Materials Inc.	+104	+32.40%
Curtiss-Wright Corp.	+98	+21.37%
Kadant Inc.	+63	+15.17%
<b>Bottom Detractors</b>		
Matador Resources Co.	-44	-16.79%
West Pharmaceutical Services Inc.	-31	-8.81%
Five9 Inc.	-24	-37.10%
MKS Instruments Inc.	-17	-16.59%
Visteon Corp.	-16	-11.08%

*The performance presented above is sourced through Factset Research Systems Inc. Past performance is not indicative of future results, and there is a risk of loss of all or part of your investment. The above does not represent all holdings in the Fund. Holdings listed might not have been held for the full period. To obtain a copy of our calculation methodology and a list of all holdings with contribution analysis, please contact your service team. The data provided is supplemental. Please see important disclosures at the end of this document.*

as WST's lead times have moved from 50 weeks to 8 weeks. While the driver is not surprising, the magnitude is as management expressed confidence in the guidance coming out of the 1Q beat. The commentary was largely positive (QoQ revenue growth, YoY growth expected in 4Q and 2025 based on confirmed order book, expanding capacity to meet demand, coverage ratio improving, strong end markets driven by biologics, GLP-1 and increased regulations). However, investors remain skeptical of the visibility / timing of the recovery. We have confidence in management execution and competitive positioning going forward.

## Portfolio Activity

The heightened market volatility this quarter provided opportunities for strategic portfolio rebalancing. Our turnover increased slightly as we capitalized on market fluctuations to align our holdings with our risk management framework. We executed several trims to maintain compliance with our risk controls related to position size and market capitalization. Notable adjustments included reducing our stakes in Devon Energy Corp. (DVN), Monolithic Power Systems Inc. (MPWR), Fair Isaac Corp. (FICO), and PTC Inc. (PTC). Further position size alignments were made for ITT Inc. (ITT) and Carpenter Technology Corp. (CRS), reflecting our current conviction levels. We sold Five9 Inc. (FIVN), Community Healthcare Trust Inc. (CHCT), and Caribou Biosciences Inc. (CRBU) because we determined they were tracking to our negative thesis. Finally, we sold Catalent Inc. (CTLT) because the discount between its take-over offer and its share price narrowed significantly.

The above average market volatility presented attractive entry points to buy both new ideas and add to existing holdings. Among our biotech basket, we added to Iovance Biotherapeutics Inc. (IOVA), the first company to successfully treat solid tumors with Car-T technology and Allogene seeking to produce next generation Car-T treatment. We initiated new positions in Viking Therapeutics Inc. (VKTX), which is rapidly progressing through clinical trials for an oral version of GLP-1 obesity treatment, and Vaxcyte Inc. (PCVX) potentially disrupting the vaccine market with its XpressCF cell-free protein synthesis platform. We added to interest rate sensitive holdings, Stifel Financial Corp. (SF), Trex Co. Inc. (TREX), Installed Building Products Inc. (IBP), Stock Yards Bancorp Inc. (SYBT), and Triumph Financial Inc. (TFIN). Finally, we added to AI beneficiaries Badger Meter Inc. (BMI) and Applied Industrial Technologies Inc. (AIT).

## Outlook

In last quarter's outlook we noted "Interest rates may emerge as the pivotal factor likely to shape investment returns for the remainder of the year...and a shift towards lower rates could usher in exciting opportunities for investors in smaller cap companies." We also noted that "benign inflation" could mark a turning point from large to smaller cap market leadership. While it is way too early to take a victory lap, we are pleased to see strength in relative performance of smaller cap vs. larger cap this quarter.

As a reminder markets exist to price risk not to deliver returns. Investor returns are simply the "risks you take that work minus the risk you take that do not work." Small cap indices have different risks than larger cap indices. Small caps have more credit and liquidity risk. They also have different factor risk with greater exposure to biotech, housing, domestic manufacturing, regional banks, and real estate. Smaller cap indices have less exposure to idiosyncratic risks, such as the "Mag 7" stocks<sup>2</sup>

So, while we cannot know for sure if the long-awaited outperformance for small caps has begun, conditions are in place if the new rate cutting cycle benefits banks, real estate, housing, and strengthens the domestic economy relative to the global economy.

---

<sup>2</sup> The "Magnificent 7" refers to the following stocks: Apple Inc. (AAPL), Microsoft Corp. (MSFT), Alphabet Inc. (GOOG), Amazon.com Inc. (AMZN), Tesla Inc. (TSLA), Meta Platforms Inc. (META), and NVIDIA Corp. (NVDA).

**Exhibit 2. Ratio of Russell 2000\* vs. S&P 100: 1979 - 2024**



Source: Bespoke Research. Note: Red line indicates start and end points.

We do not typically address politics in the outlook, but we cannot ignore that we have an election coming up in November. Most likely we will end up with another “divided government” no matter who is elected president. Not a lot gets done, which is frankly a good thing for markets. However, the president can execute executive orders without congressional approval. If Trump is elected, we would expect more executive orders that benefit industries where regulations slow progress. We would expect more mergers in banking, approval for “free to choose” options that benefit biotech, less red tape for real estate, housing, and bitcoin. These beneficiaries tend to be more prevalent on a capitalization weighted basis within smaller cap indices. Tariffs may favor steel and other domestic manufacturing also more prevalent in smaller cap indices. Additionally, Trump’s VP pick, Vance, with a private equity background, favors smaller tech companies who often do not achieve their potential because they get squashed or bought by mega-cap tech companies. There may be pressure on big tech from a second Trump administration also favoring small relative to large. Harris’ executive order list is not as clear as it relates to the direct impact on businesses, but it is fair to assume it would resemble the status quo. We wouldn’t be surprised to see smaller cap indices outperform large caps with a Trump victory and underperform with a Harris victory.

We are better at adapting than forecasting because we are mindful of Jame’s Montier’s advice, “If you don’t know what is going to happen, don’t structure your portfolio like you do.” Confession: We don’t know. The portfolio structure is efficiently diversified across sector and lifecycle because we have no idea what is going to happen. The portfolio is structured this way precisely to potentially improve the odds of outperforming across most of the likely scenarios, but also to potentially protect against unforecastable shocks, so that company specific value creation is the primary driver of excess return over the long-term.

We believe that by owning what we believe to be the best allocators of capital with skilled management teams that demonstrate knowledge building cultures, adaptability, and capital allocation consistent with long-term value creation, we believe we can own a portfolio of smaller companies that will grow to become larger companies, thereby providing our investors attractive long-term risk adjusted returns.

# RMB Small Cap Fund



Thank you for your commitment to the Fund. Should you have any questions regarding your investment, please do not hesitate to contact us.

Sincerely,

Chris Faber  
Portfolio Manager

## TOP 10 HOLDINGS AS OF 9/30/24

<b>Company</b>	<b>% of Assets</b>
<b>Curtiss-Wright Corp.</b>	4.83%
<b>Carpenter Technology Corp.</b>	3.91%
<b>Kadant Inc.</b>	3.84%
<b>Fair Isaac Corp.</b>	3.83%
<b>Monolithic Power Systems Inc.</b>	3.82%
<b>Eagle Materials Inc.</b>	3.66%
<b>EastGroup Properties Inc.</b>	3.12%
<b>Stifel Financial Corp.</b>	2.86%
<b>Pool Corp.</b>	2.72%
<b>Tyler Technologies Inc.</b>	2.70%

*Holdings are subject to change. The above is a list of all securities that composed 35.30% of holdings managed as of 9/30/2024 under the RMB Small Cap Fund ("Fund") of Curi RMB Capital, LLC ("Curi RMB Capital") based on the aggregate dollar value. This list is provided for informational purposes only and may or may not represent the current securities managed. It does not represent all of the securities purchased, sold, or recommended for advisory clients (under the Fund or otherwise) during the calendar quarter ending 9/30/2024. The reader should not assume that investments in the securities identified and discussed were or will be profitable. For a complete list of historical recommendation for the Fund, please contact RMB Investors Trust at 855-280-6423.*

The opinions and analyses expressed in this letter are based on Curi RMB Capital, LLC's ("Curi RMB Capital") research and professional experience as expressed as of the date of our mailing of this letter. Certain information expressed represents an assessment at a specific point in time and is not intended to be a forecast or guarantee of future performance, nor is it intended to speak to any future time periods. Curi RMB Capital makes no warranty or representation, express or implied, nor does Curi RMB Capital accept any liability, with respect to the information and data set forth herein, and Curi RMB Capital specifically disclaims any duty to update any of the information and data contained in this letter. The information and data in this newsletter does not constitute legal, tax, accounting, investment or other professional advice. Past performance is not indicative of future results, and there is a risk of loss of all or part of your investment. This information is confidential and may not be reproduced or redistributed to any other part without the permission of Curi RMB Capital.

RMB Asset Management is a division of Curi RMB Capital.

Diversification does not assure a profit or protect against a loss in a declining market.

An investment cannot be made directly in an index. The index data assumes reinvestment of all income and does not bear fees, taxes or transaction costs. The investment strategy and types of securities held by the comparison index may be substantially different from the investment strategy and types of securities held by your account. The Russell 2000® Index measures the performance of the 2,000 smallest companies in the Russell 3000® Index. The Russell 3000® Index is a capitalization-weighted stock market index that seeks to be a benchmark of the entire U.S. stock market. The index does not reflect investment management fees, brokerage commissions, or other expenses associated with investing in equity securities.

**Basis Point (bps):** A unit that is equal to 1/100th of 1% and is used to denote the change in a financial instrument.

**The Volatility Index or VIX** is the annualized implied volatility of a hypothetical S&P 500 stock option with 30 days to expiration. The price of this option is based on the prices of near-term S&P 500 options traded on CBOE Options Exchange, formerly known as the Chicago Board Options Exchange (CBOE), is the world's largest options exchange.

**The Russell 1000® Index** is a U.S. stock market index that tracks the highest-ranking 1,000 stocks in the Russell 3000 Index, which represent about 93% of the total market capitalization of that index.

**The S&P 100 Index** is a stock market index of United States stocks maintained by Standard & Poor's. Index options on the S&P 100 are traded with the ticker symbol "OEX".

## **Life Cycle Stages**

**Rockets:** These are hyper-growth, early-stage companies which consume a lot of capital as they try to execute their business model. Typically, they are innovative with new products, new services, or new business processes that may threaten the status quo of existing larger companies. Upside potential may be huge, but so is downside risk. Volatility is high, and results are often binary.

**Golden Goodies:** These are Rockets that have survived and proven that they have viable long-term business models. They have historically tended to grow faster than the overall market and need to beat the fade in returns by continuing to fend off competitive threats. These have a history of being classic asset compounders and will continue to create wealth for as long as they can beat that fade.

**Falling Angels:** These are Golden Goodies whose growth rates have slowed because they have become so large or their economic returns have been falling because of competitive threats or an inability to find reinvestment opportunities at current high rates of return.

**Corks:** These are mature companies where the economic returns approximate the cost of capital. Asset growth does not add or destroy value, so improving the level of economic return is critical to their success.

**Turn Arounds:** These distressed companies are the victims of overcapacity, weak competitive position, or poor capital allocation. In order to be successful, they must divest the lower return segments of their overall business.

**Investors should consider the investment objectives, risks, charges and expenses carefully before investing. For complete information about the Fund, including a free prospectus, please contact RMB Investors Trust at 855-280-6423, or visit the website at [www.rmbfunds.com](http://www.rmbfunds.com). The prospectus contains important information about the funds, including investment objectives, risks, management fees, sales charges, and other expenses, which you should consider carefully before you invest or send money.**

All investing involves risk including the possible loss of principal. There can be no assurance that the Fund will achieve its investment objective. Investments in smaller companies involve additional risks such as limited liquidity and greater volatility. Incorporation of Environmental, Social, and Governance (ESG) factors into the Fund's investment process may cause the Fund to make different investments and have different investment performance and exposures to different issuers and industries than funds that do not incorporate ESG considerations.

**Small-Capitalization Companies Risk** – Historically, stocks of small-capitalization companies and recently organized companies have been more volatile in price than those of the larger market capitalization companies. Among the reasons for the greater price volatility is the lower degree of liquidity in the markets for such securities, which may make these securities difficult to value and to sell. As a result, some of the Fund's small cap holdings may be considered or become illiquid. Such companies also may have limited product lines and financial resources and may depend upon a limited or less experienced management group.

Foreside Fund Services, LLC, Distributor