



# RMB Fund

as of December 31, 2025

## Investment Philosophy & Approach

The RMB Fund seeks capital appreciation by investing in a diverse portfolio primarily consisting of common stocks. The Fund invests in high quality companies of all market capitalizations with a focus on businesses that have sustainable, long term competitive advantages. Portfolio companies may range from small and mid-sized businesses that are earlier in their growth life cycle, to larger more mature companies that return capital to shareholders through increasing dividend payments and share buy-backs. High quality companies are generally defined as companies with product leadership, that have potential for sustained operating and revenue growth and that are run by strong management teams that allocate shareholder capital wisely and align their economic interests with shareholders. The Fund employs a long-term approach when selecting stocks and seeks to own businesses that have durable franchises that can weather the ups and downs of volatile business cycles.

### Seek companies that appear to have the following characteristics:

- Potential for sustained operating and revenue growth
- Product leadership and strong management teams that focus on enhancing shareholder value
- Companies with histories of paying regular dividends
- Securities that appear undervalued by the market or poised to benefit from restructuring or similar business changes

## Performance

	Quarter	YTD	1 Year	3 Years	5 Years	10 Years	Since Inception (6/16/1975)
<b>RMBHX</b>	+4.59%	+12.49%	+12.49%	+15.13%	+9.35%	+11.60%	+10.58%
<b>S&amp;P 500 Index</b>	+2.66%	+17.88%	+17.88%	+23.01%	+14.42%	+14.82%	+11.84%
<b>Russell 3000® Index</b>	+2.40%	+17.15%	+17.15%	+22.25%	+13.15%	+14.29%	--
<b>RMBHX (Load Adjusted)</b>	-0.64%	+6.86%	+6.86%	+13.18%	+8.23%	+11.03%	+10.47%

The performance data quoted represents past performance and is not a guarantee of future results. The investment return and principal value of an investment will fluctuate, so that those shares, when redeemed, may be worth more or less than their original cost. All returns reflect reinvested dividends, but do not reflect the deduction of taxes that an investor would pay on distributions or redemptions. Current performance may be lower or higher than the data quoted due to market volatility. Returns longer than one year are annualized. All data as of 12/31/2025 unless otherwise noted. To obtain performance as of the most recent month end, please call 800-462-2392.

The Fund have a maximum front-end sales charge of 5.00%. Sales charges are waived for clients of investment intermediaries, or for those who purchase shares via no-transaction-fee platforms.

Holdings and sector weightings are subject to change. The holdings listed should not be considered a recommendation to buy or sell any security listed.

## Holdings

Holding Statistics	Top 10 Holdings	Weighting	GICS Sectors	Weighting
Total Number of Holdings <b>36</b>	<b>Alphabet Inc.</b>	12.60%	<b>Information Technology</b>	36.78%
	<b>Microsoft Corp.</b>	11.69%	<b>Financials</b>	15.89%
Assets in Top 10 Holdings <b>59.93%</b>	<b>NVIDIA Corp.</b>	6.83%	<b>Communication Services</b>	14.03%
	<b>Amazon.com Inc.</b>	6.65%	<b>Consumer Discretionary</b>	12.25%
Weighted Avg. Market Cap <b>1,787,430</b>	<b>Apple Inc.</b>	5.61%	<b>Industrials</b>	8.35%
	<b>Visa Inc.</b>	3.97%	<b>Health Care</b>	5.29%
Turnover Ratio <b>42.92%</b>	<b>The TJX Companies Inc.</b>	3.45%	<b>Real Estate</b>	1.89%
	<b>AMETEK Inc.</b>	3.29%	<b>Energy</b>	1.72%
Active Share <b>62.01%</b>	<b>JPMorgan Chase &amp; Co.</b>	3.15%	<b>Consumer Staples</b>	1.64%
	<b>Booking Holdings Inc.</b>	2.68%	<b>Materials</b>	1.23%
			<b>Utilities</b>	0.00%



# RMB Fund

as of December 31, 2025

## Fund Overview



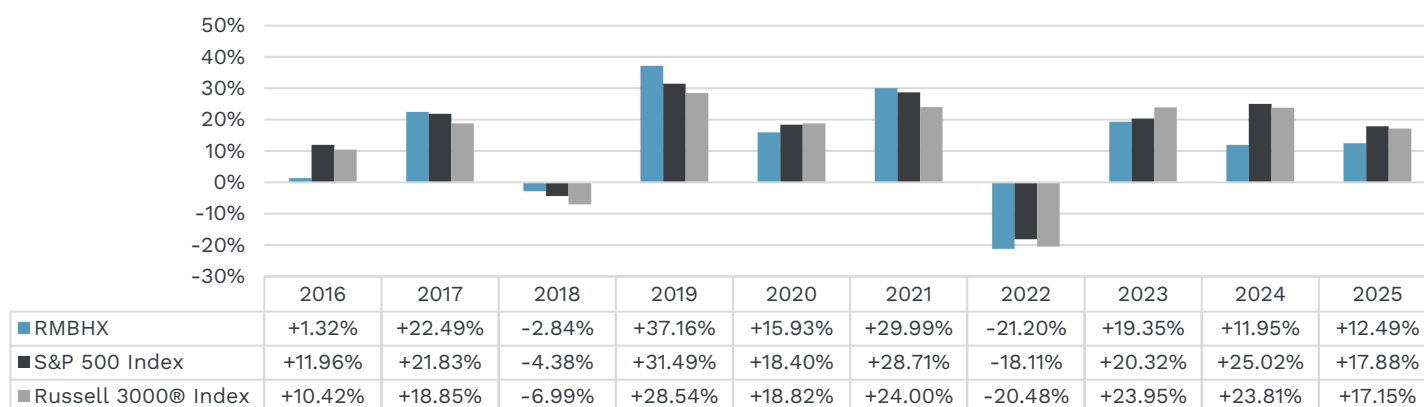
**Thomas Fanter**  
**John O'Connor, CFA®**  
Portfolio Managers

**Curi Capital, LLC**  
Adviser Manager

**\$114.5**  
Net Assets (millions)

Ticker	Class	CUSIP	Inception Date	Expense Ratio	Minimum Investment	Sales Charge	Redemption Charge
RMBHX	A	74968B605	6/16/1975	1.24% (5/1/25)	\$2,500	5.00%	0.00%
RMBJX	C	74968B704	4/30/2004	1.99% (5/1/25)	\$2,500	1.00%	0.00%
RMBGX	I	74968B886	2/1/2017	0.99% (5/1/25)	\$100,000	0.00%	0.00%

## Annual Performance vs. Index



Investment Terms: **Annualized Rate of Return** is the geometric mean return of the portfolio calculated for a one-year period. **Active Share** is a measure of the percentage of stock holdings in a manager's portfolio that differs from the benchmark index. **Turnover Ratio** or **Turnover Rate** is the percentage of a mutual fund or other portfolio's holdings that have been replaced in a 12-month period. **Weighted Average Market Capitalization** refers to a type of stock market index construction that is based on the market capitalization of the index's constituent stocks; large companies would, therefore, account for a greater portion of an index than smaller stocks.

All investing involves risk including the possible loss of principal. The RMB Fund invests in larger, more established companies, which may not respond as quickly to competitive challenges or have higher growth rates than smaller companies might have during periods of economic expansion. There can be no assurance that the Fund will achieve its investment objective.

CFA® and Chartered Financial Analyst® are registered trademarks owned by CFA Institute.

The S&P 500 Index is widely regarded as the best single gauge of the U.S. equity market. It includes 500 leading companies in leading industries of the U.S. economy. The index focuses on the large-cap segment of the market and covers approximately 75% of the U.S. The Russell 3000® Index is a capitalization-weighted stock market index that seeks to be a benchmark of the entire U.S. stock market. The inception date of the Russell 3000® Index is January 1, 1984. Indices do not reflect investment management fees, brokerage commissions, or other expenses associated with investing in equity securities. The indices include dividends reinvested. One cannot invest in an index.

**All investing involves risk including the possible loss of principal. There can be no assurance that the Fund will achieve its investment objective. Investors should consider the investment objectives, risks, charges and expenses carefully before investing. For a prospectus or summary prospectus with this and other information about the Fund please visit [rmbfunds.com](http://rmbfunds.com) or contact RMB Investors Trust at 855-280-6423. Read the prospectus or summary prospectus carefully before investing.**

An investment in the fund is not insured or guaranteed by the Federal Deposit Insurance Corporation or any other government agency.

Forside Fund Services, LLC, Distributor